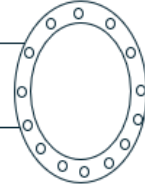


Deposition

- Designed for deposition applications such as MBE, sputtering and CVD
- Alternative applications include substrate annealing, degassing and other high temperature material modifications
- Substrate heating to 1,200°C
- Continuous substrate rotation
- Homing for automatic transfer alignment



- Magnetic coupling technology providing high torque and thrust with in-built fail-safe design
- Bellows sealed actuators with demountable bellows for servicing

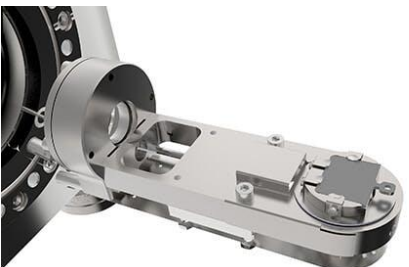
Motion and Manipulation

- Devices for all types of motion down to UHV levels of vacuum (10^{-12})
- Providing: X, Y, Z motion, rotation, tilt and combinations of these
- Custom solutions available



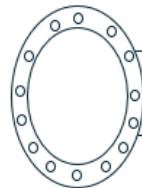
Surface Science

- Analytical stages with multiple parking positions
- Up to 5 axes of motion with sample biasing
- Sample cooling to <30K with LHe and LN2 precooling
- Sample heating to 1,200°C



Typically used in:

- Analytical instruments
- Surface analysis equipment
- Synchrotron end stations



- Wobble sticks
- Transfer arms
- Bespoke complex designs



Sample Transfer

- Suitable for industry standard, flags, pucks and wafers
- A range of flange sizes and stroke lengths
- Motorisation or manual actuation
- Customisation available

Please contact us at:
Office: +44 (0)1323 811188
email: sales@uhvdesign.com
website: www.uhvdesign.com